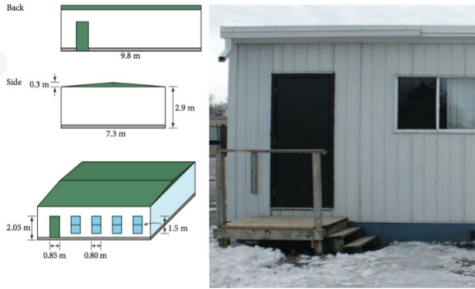
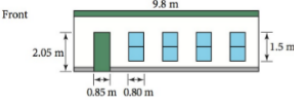


Cost of Building Portable Classrooms

Suppose a recent tornado destroyed a number of buildings in your town. Your school must accommodate 20% more students until schools in neighbouring communities can be rebuilt. All prefabricated portables have sold out so new portables will be built. You have been assigned the task of estimating the cost of the building project.

The diagrams show the desired measurements for the portables.



Sep 15-8:55 AM

Sep 15-8:58 AM

Your boss has given you these additional details.

- Each portable has two doors and four windows as shown.
- There will be a 10-cm deep base of gravel under each portable.
- One gallon of paint will cover 400 ft². Only the inside walls of the portables will be painted.
- Hardware is estimated at 5% and electrical is estimated at 10% of the total materials cost for each portable.
- Each portable will require 80 working hours to build.
- You can return any materials you do not use.

1. The table shows the items to include in your cost estimate. Copy the table. Use it to calculate the cost to build one portable.

Description	Cost per Unit	Quantity	Total Cost
Materials for walls, floor, and roof (study, insulation, drywall, siding), in square feet	\$6.95/ft ²		
Gravel, in cubic yards	\$95.00/yd ³		
Paint (two coats), in gallons	\$26.00/gal		
Doors	\$110.00 each		
Windows	\$90.00 each		
Subtotal			
Hardware	5% of materials cost		
Electrical	10% of materials cost		
Labour	\$30.00/h		

Sep 15-8:58 AM

Sep 15-8:59 AM

2. Determine the number of portables required for your school if your school must accommodate 20% more students.
3. Determine the total cost for the project.
4. Research sample templates, which are used for writing estimates.
5. Prepare a formal written estimate for the total cost of the project.

Sep 15-8:59 AM